

Protect-a-Tow

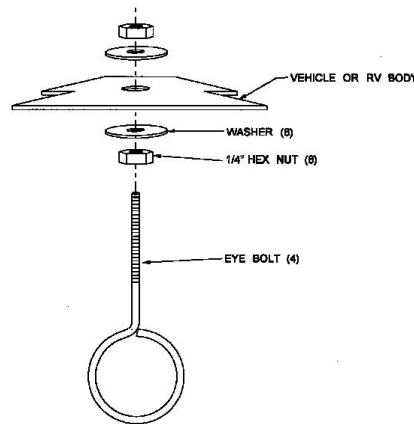
INSTALLATION INSTRUCTIONS



"Protect-a-Tow" is a unique towing protection device that will protect your Car and Motorhome from flying debris, stones, mud, etc..... This universal design will fit most towing configurations. It will hook up in less than a minute between your Car and Motorhome . "Protect-a-Tow" will also protect your hitch, wiring harness and safety cables. "Protect-a-Tow" is lightweight and can be easily stored away in the storage case provided.

Initial Installation

Install two eye bolts on the bottom rear of your Motorhome as far apart as possible. Hook up your "Protect-a-Tow" using the two previously installed eye bolts and mark the two inside eye bolts on the bottom of your motorhome and install. You should now have four eye bolts under your Motorhome. Now install two eye bolts on the bottom of your towed vehicle 54" apart or more.



Eye Bolt installation diagram

Hooking Up your Protect-a-Tow

Under your tow bar, hook up the wide part of your "Protect-a-Tow" to your Motorhome and the narrow part to your towed vehicle. Make sure elasticized cord is slightly stretched. Unfold the cross bar and slip into the couplings to expand to full length. Feed the cross bar through the centre bungee loop in the middle of your protector. Hook the ends of the cross bar

onto the exposed elasticized cord at the cut outs of the mesh on each side. The cross bar should be on top of your tow bar. The cross bar will prevent the protector from dropping down on sharp turns. To remove your protect-a-tow, reverse procedure.

Cleaning and Storage

To keep your Protect-a-Tow unit clean and extend the life of components periodic cleaning with a soap and water solution is advisable. It is also recommended to rinse the seam in which the elasticized cord travels with a water hose periodically to remove any grit accumulation in the seam and extend the life of the elasticized cord. Protect-a-Tow should be dry before storing in the supplied storage bag. If visible signs of wear occur on the elasticized cord it should be replaced, replacement cords are available from Protect-a-Tow.

NOTE: Be sure when mounting Protect-a-Tow that it does not come into contact with rear exhaust pipes and/or exhaust. Protect-a-Tow is constructed of a PVC coated polyester mesh that will be damaged from direct contact with hot exhaust pipes. If you have concerns regarding use or installation contact Protect-a-Tow toll free at 1-888-264-5444.

90 day limited Manufacturers Warranty against defects in material or workmanship.

Protect-a-Tow
498 Rall's Island Rd.
Box 3775
The Pas, MB R9A 1S4
Canada

Toll free 1-888-264-5444

Web Site: www.protectatow.com

Email: protectatow@aim.com